

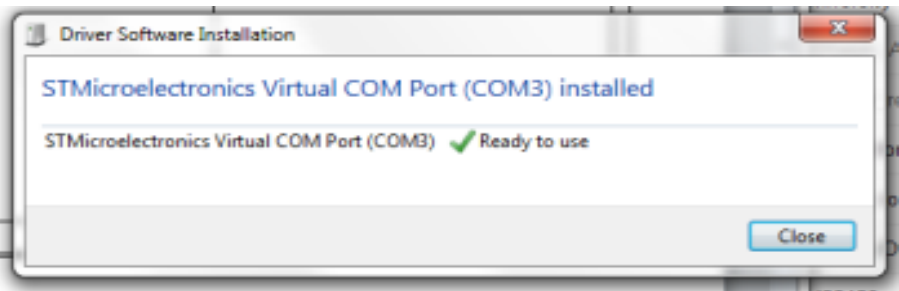
Instructions for Use: TEMP-WiFi-TH

Brand Name of Product	TEMP-WiFi-TH
Generic Name of Product	WiFi temperature and humidity data logger
Product Code Number(s)	TEMP-WiFi-TH
Purpose of Product	To track and monitor temperatures of multiple areas to gauge appropriate climate settings. This device measures the temperature and humidity of an environment in which it is situated and transmits data to a PC via WiFi. Temperature is monitored in real time on a large and easy to read display. This device also allows management to record, track and document the temperature of rooms from their office PC.
Range of Applications for Product	Any area that requires temperature and humidity monitoring, including decontamination, sterile storage, sterile packing, etc.
Key Specifications of Product	<ul style="list-style-type: none"> • Theromologger • Mounting Bracket • Temperatures -20° to 140°F • Software Installation USB Stick • Runs on 802.11b compatible networks

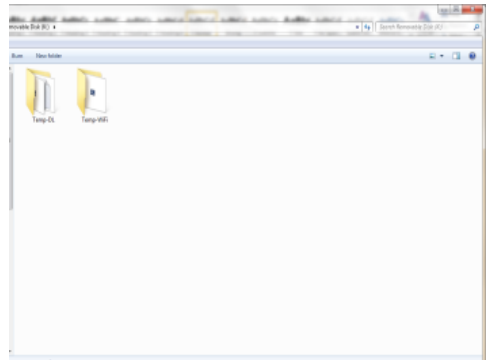
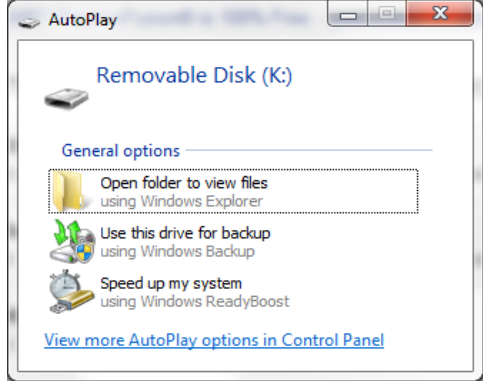
Shipping & Storage

Shipping Conditions & Requirements	
Storage Conditions	
Packaging Contents	
Shelf Life	

Instructions for Using Product

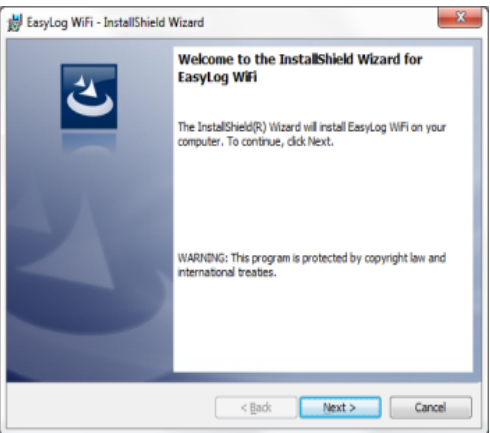
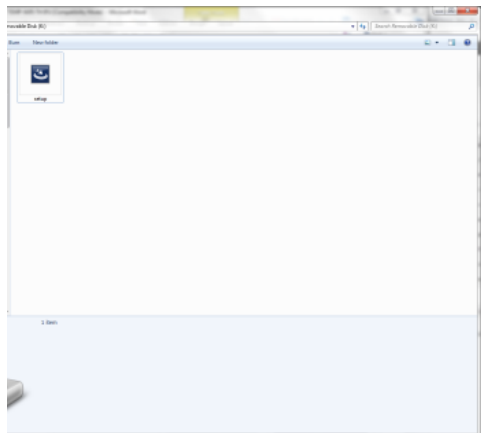
Description of Use (s)	This device measures the temperature and humidity of the environment in which it's situated and transmits data to a PC via WiFi.
Preparation for Use	<ol style="list-style-type: none"> 1. Your sensor is already reading temperature and humidity, but it will not be configured or connected to your WiFi network until you complete the product set-up. 2. Your sensor is set-up using the included software package called EL-WiFi which is available on the supplied USB stick. 3. Plug the supplied USB install stick in an open USB slot on your PC. Two folders will be on the USB stick. 4. Select the "Temp-WiFi" folder when installing software. (Temp-DL is a software for another product and will not work with the Temp-WiFi-TH) 5. Your sensor will arrive partly charged, but ideally you should charge it for 24 hours before use for optimum performance. 6. To charge, connect the supplied USB cable to the data logger and your PC. Charging will begin automatically. <p>For product support please call 800-521-6224 ext. 6657 or email hmit@hmark.com to schedule a call between your IT department and the Healthmark Help Desk.</p>
Diagrams (drawings, pictures)	<p>USE THESE PICTURES ALONG WITH THE NUMBERED STEPS BELOW FOR ACCURATE SET UP</p> 

1.



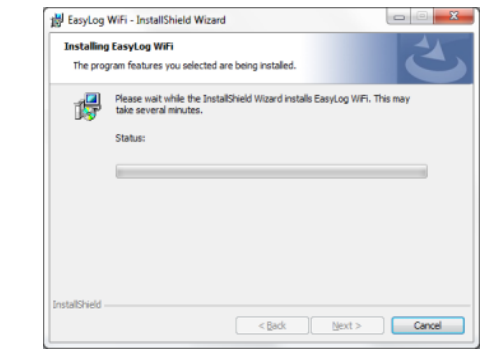
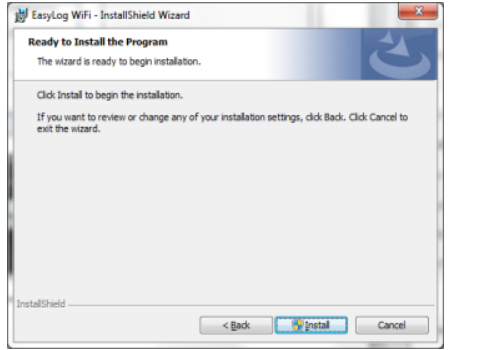
2.

3.



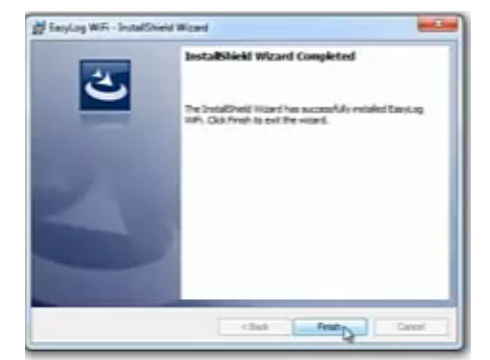
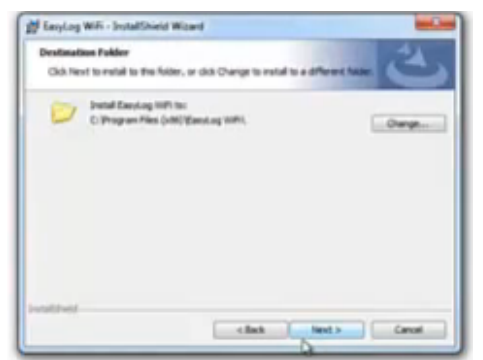
4.

5.



6.

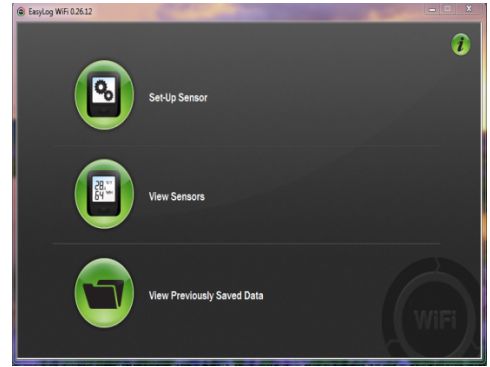
7.



8.



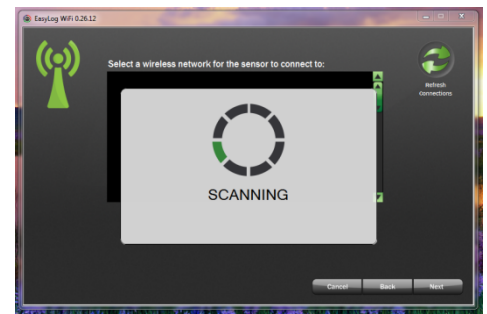
9.



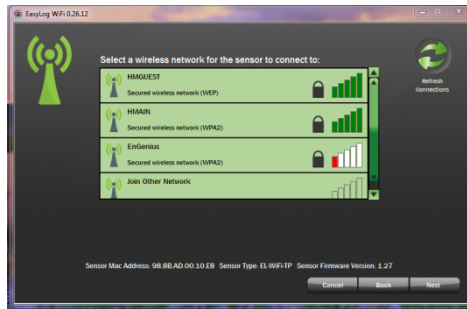
10.



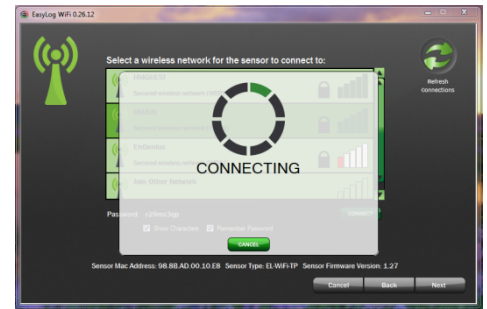
11.



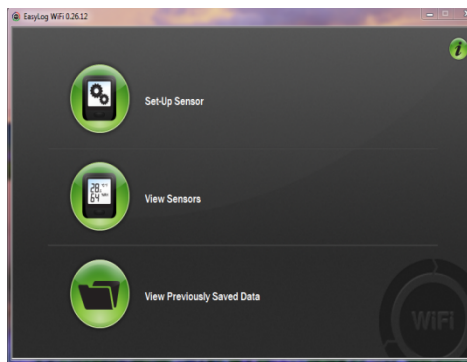
12.



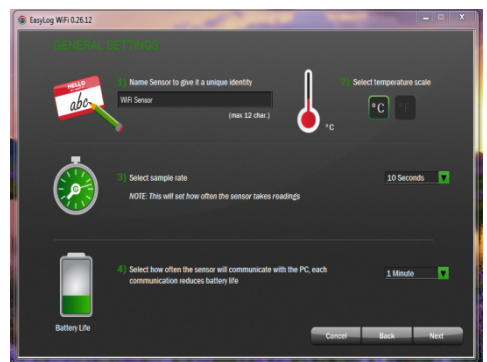
13.



14.

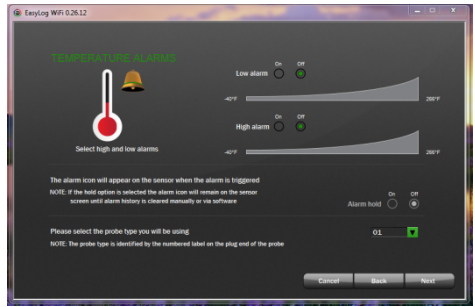


15.

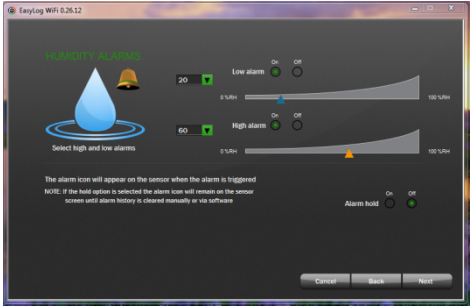


16.

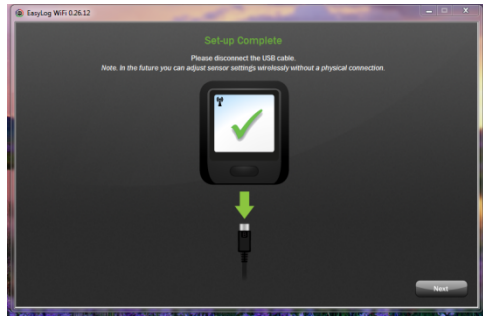
17.



18.



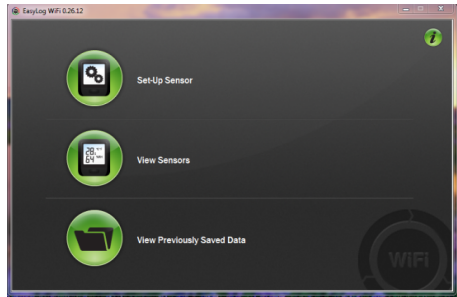
19.



20.



21.



22.

Steps for Use of Product	<ol style="list-style-type: none"> 1. When you plug the thermometer into your PC, you will see the “new hardware detected.” The driver should automatically install. If not, you may need assistance from your IT department. 2. Browse to the USB drive. 3. Open the folder titled “Temp-WiFi” on the drive. 4. Double click the “Setup” icon to launch the installation of the software. 5. When presented the option, select “Next” from the installation window. 6. When presented the option, select “Install” from the installation window. 7. You might have to wait a few minutes for the install to take place 8. This window will inform you where the “Temp-WiFi” software will be installed on your computer. If you are satisfied with the folder described, select “Next”. If you would like to have the software installed in a different folder, select the “Change” button to the right of the screen. 9. Once completed, click “Finish” to close the install window. YOU ARE NOW DONE WITH THE SETUP 10. There should now be an EasyLog Wi-Fi icon on your desktop. 11. Once EasyLog Wi-Fi icon is selected you will see a screen to set-up sensor, view sensors or view previously saved data. 12. To set up sensor select “Set-up Sensor” icon and connect your sensor to the PC with the USB cable provided. 13. To find a wireless network for the sensor to connect to click “Next” to search for networks. 14. Select the wireless network you wish to connect to and click “Next”. You will need a Wi-Fi access code for this step. 15. Wi-Fi temp program will link to wireless network. 16. To view and adjust a temperature sensor, click “view sensor” from the home screen. 17. Viewing and adjusting sensor general settings: <ul style="list-style-type: none"> • Give the sensor a unique identity • Select temperature scale • Select sample rate (This will set how often the sensor takes readings.) To determine an accurate sample rate use an appropriate industry and/or facility reference that relates to the specific application for the Temp WiFi. • Select how often the sensor will communicate with the PC, the more frequent the communication the shorter the battery life. 18. Temperature Alarm will appear when the alarm is triggered whether it’s a low alarm or high alarm. 19. Humidity Alarm will appear when the alarm is triggered whether it’s a low alarm or high alarm. 20. When you see the “Set-up Complete” screen you may disconnect your USB cable. All future settings can now be adjusted via WiFi. 21. Now position the monitor in the location that you want to monitor. To view the signal strength, press the button on the sensor three times. 22. For more information and instructions on using the sensor and software, click the “i” button on the home screen.
Interpretation of Results	
Contraindications of Test Results	
Documentation	
Special Warnings and Cautions	<ul style="list-style-type: none"> • Recharging: The sensor will automatically start recharging while connected to a PC. The battery life of your sensor depends on the regularity of the transmissions. • Be sure when mounting the sensor that it is secure and in an area that won’t get wet.
Disposal	

Reprocessing Instructions	
Point of Use	
Preparation for Decontamination	
Disassembly Instruction	
Cleaning – Manual	
Cleaning – Automated	
Disinfection	
Drying	

Maintenance, Inspection, and Testing	
Reassembly Instructions	
Packaging	
Sterilization	
Storage	
Additional Information	

Related Healthmark Products	
Other Product Support Documents	ProFormance™ Brochure, ProFormance™ Price List
Reference Documents	
Customer Service Contact	Healthmark Industries Company, Inc 18600 Malyn Blvd. Fraser, MI 48026 1-586-774-7600 healthmark@hmark.com hmark.com