





**Instructions for Use: TEMP-WiFi-TP**

<b>Brand Name of Product</b>	TEMP-WiFi-TP
<b>Generic Name of Product</b>	WiFi temperature data logger
<b>Product Code Number(s)</b>	TEMP-WiFi-TP
<b>Purpose of Product</b>	This device measures the temperature of baths in which it is situated and transmits data to a PC wirelessly. Temperature is monitored in real time on a large and easy to read display. This device also allows management to record, track, and document the temperature reprocessing baths from their office PC.
<b>Range of Applications for Product</b>	Ultrasonic cleaners, precleaning sinks, soaking trays, disinfecting solutions
<b>Key Specifications of Product</b>	<ul style="list-style-type: none"> <li>• Thermologger</li> <li>• Temperatures -40- to 257 °F</li> <li>• Mounting Bracket</li> <li>• Waterproof Probe</li> <li>• Software Installation USB Stick</li> <li>• Runs on 802.11b compatible networks</li> </ul>

<b>Shipping &amp; Storage</b>	
<b>Shipping Conditions &amp; Requirements</b>	N/A
<b>Storage Conditions</b>	N/A
<b>Packaging Contnets</b>	N/A
<b>Shelf Life</b>	N/A

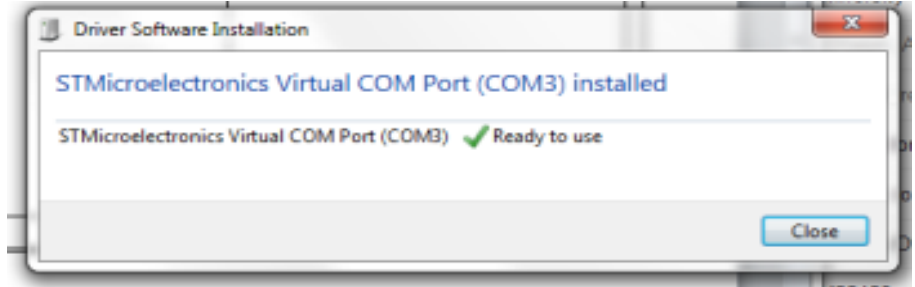
<b>Instructions for Using Product</b>	
<b>Description of Use(s)</b>	This device measures the temperature of baths in which it is situated and transmits data to a PC wirelessly.
<b>Preparation for Use</b>	<ol style="list-style-type: none"> <li>Upon opening the box, you will note the display screen will read “P Err”, which means the probe needs to be inserted into the thermologger.               <ol style="list-style-type: none"> <li>A few seconds after inserting the probe, the room temperature will be displayed on the screen.</li> </ol> </li> </ol> <div style="display: flex; justify-content: space-around; align-items: center;">   </div> <ol style="list-style-type: none"> <li>Temperature is now being read but the sensor is not yet configured or connected to your Wi-Fi network until you complete the product setup.</li> <li>Product set up is performed using the supplied USB stick preloaded with a software package called EL-WiFi.</li> </ol> <ol style="list-style-type: none"> <li>Plug the supplied USB stick in an open USB port on your PC. Two folders will be on the USB stick.</li> <li>Select the “Temp-WiFi” folder when installing software. (NOTE: Temp-DL is a software for another product and will not work with the Temp-WiFi-TH.)</li> </ol>

4. Your sensor will arrive partly charged, but ideally you should charge it for 24 hours before use for optimum performance.
5. To charge, connect the supplied USB cable to the data logger and your PC. Charging will begin automatically.

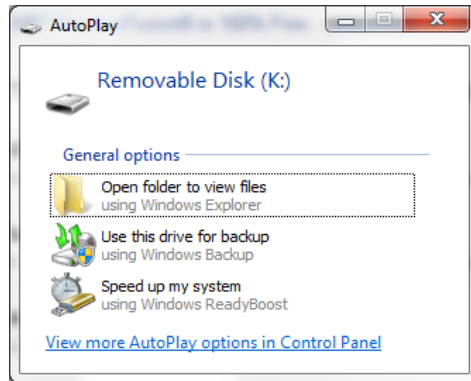
*For product support please call 800-521-6224 ext. 6657 or email [hmit@hmark.com](mailto:hmit@hmark.com) to schedule a call between your IT department and the Healthmark Help Desk.*

**Diagrams (drawings, pictures)**

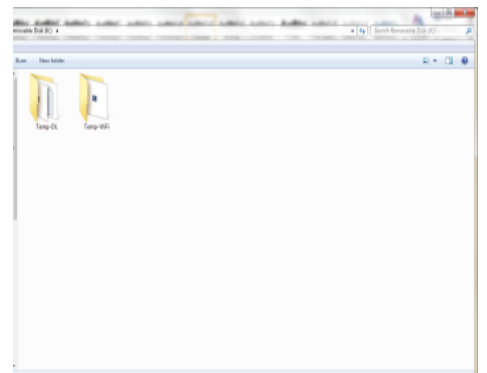
USE THESE PICTURES (ALONG WITH THE NUMBERED STEPS BELOW) FOR ACCURATE SET UP.



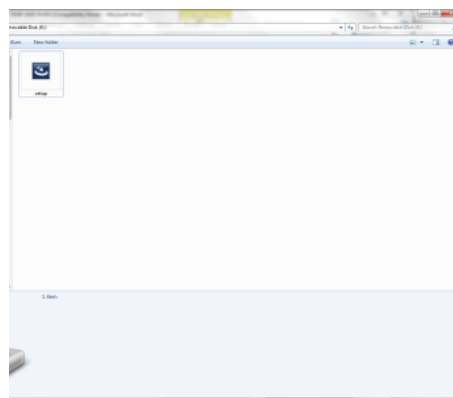
1.



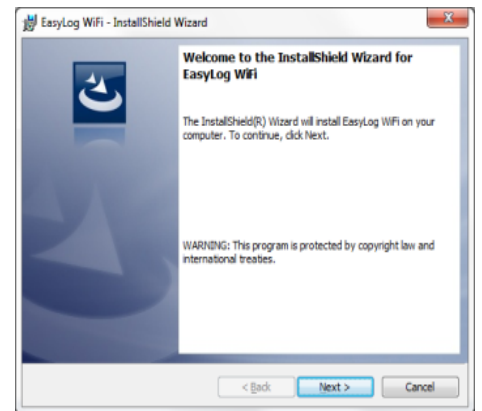
2.



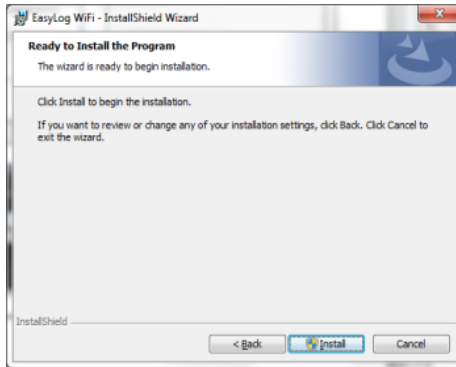
3.



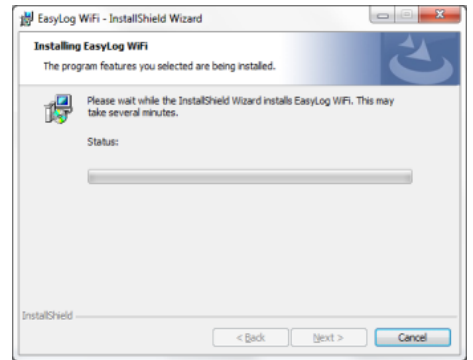
4.



5.



6.



7.



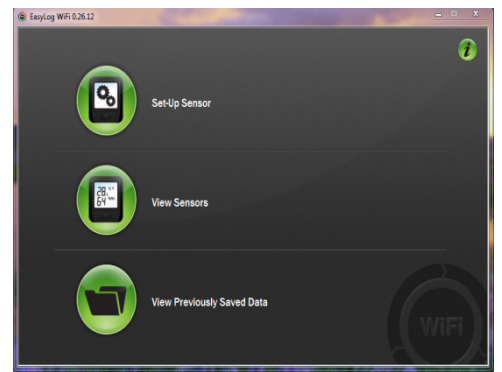
8.



9.



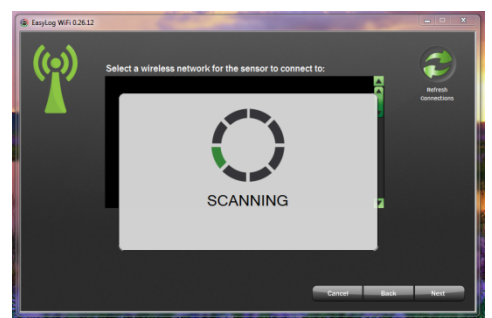
10.



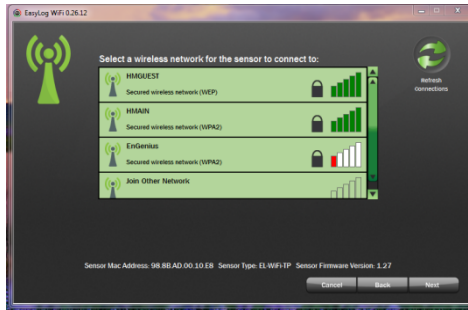
11.



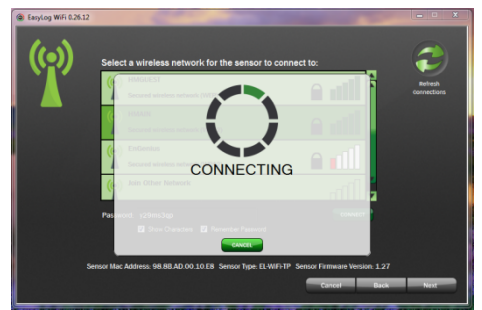
12.



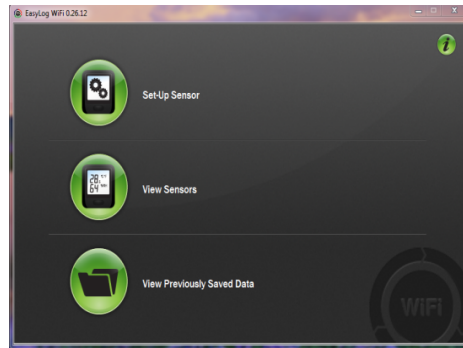
13.



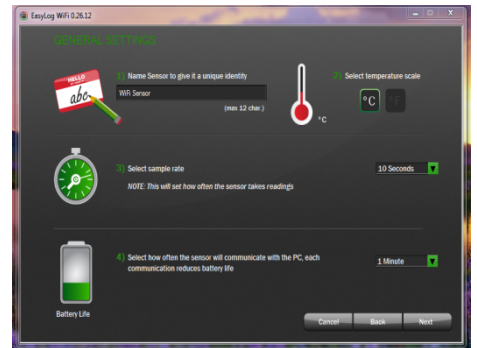
14.



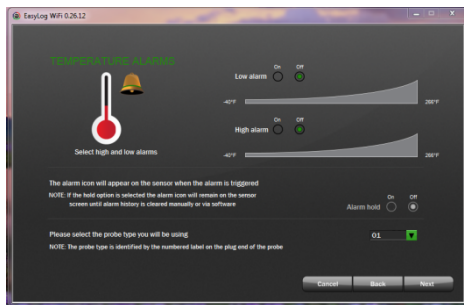
15.



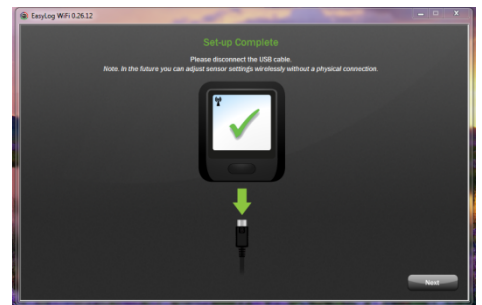
16.



17.



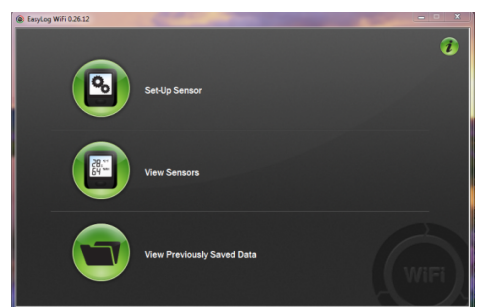
18.



19.



20.



21.

<b>Steps for Use of Product</b>	<ol style="list-style-type: none"> <li>1. When the thermometer is plugged into your PC, you will see the “New hardware detected.” NOTE: The driver should automatically install. If not, you may need administrative rights assistance from your IT department.</li> <li>2. Browse to the USB drive.</li> <li>3. Open the folder titled “Temp-WiFi”.</li> <li>4. Double click the “Setup” icon to launch the installation of the software.</li> <li>5. When presented the option, select “Next” from the installation window.</li> <li>6. Select “Install” from the installation window.</li> <li>7. Please note, you may wait a few minutes before installation takes place.</li> <li>8. This window will inform you of what destination the “Temp-WiFi” software will be installed on your computer. If you are satisfied with the folder location, select “Next”. If you would like to change the installation destination, select the “Change” button to the right of the screen.</li> <li>9. Once completed, click “Finish” to close the install window.</li> </ol> <p><b>YOU ARE NOW DONE WITH THE SETUP.</b></p> <ol style="list-style-type: none"> <li>10. There should now be an EasyLog WiFi icon on your desktop.</li> <li>11. When EasyLog WiFi icon is selected, you will see a screen to set up sensor, view sensors, or view previously saved data.</li> <li>12. To set up sensor, select “Set up Sensor” icon and connect your sensor to the PC with the USB cable provided.</li> <li>13. To find a wireless network for the sensor to connect to click “Next” to search for networks.</li> <li>14. Select the wireless network you wish to connect to and click “Next”. NOTE: You will need a Wi-Fi access code for this step.</li> <li>15. Wi-Fi temp program will link to wireless network.</li> <li>16. To view and adjust a temperature sensor, click “view sensor” from the home screen.</li> <li>17. Viewing and adjusting sensor general settings: <ul style="list-style-type: none"> <li>• Give the sensor a unique identity</li> <li>• Select temperature scale</li> <li>• Select sample rate. (This will set how often the sensor takes readings.) To determine an accurate sample rate, use an appropriate reference that relates to your specific need for the Temp WiFi.</li> <li>• Select how often the sensor will communicate with the PC (each communication reduces battery life).</li> </ul> </li> <li>18. Temperature Alarm will appear when the alarm is triggered (whether it’s a low alarm or high alarm).</li> <li>19. When you see the “Set up Complete” screen, you may disconnect your USB cable. All future settings can now be adjusted without a physical connection.</li> <li>20. Now, position the monitor in the location you want to monitor. To view the signal strength, press the button on the sensor three (3) times.</li> <li>21. For more information and instructions on using the sensor and software, click the “i” button on the home screen.</li> </ol>
<b>Interpretation of Results</b>	N/A
<b>Contraindications of Test Results</b>	N/A
<b>Documentation</b>	N/A
<b>Special Warnings and Cautions</b>	<ul style="list-style-type: none"> <li>• <i>Recharging:</i> The sensor will automatically start recharging while connected to a PC. The battery life of your sensor depends on the regularity of the transmissions.</li> <li>• Be sure (when mounting the sensor) that it is secure and in an area that won’t get wet. The probe is designed to be submerged in liquid, but the thermologger is not.</li> </ul>
<b>Disposal</b>	N/A

<b>Reprocessing Instructions</b>	
<b>Point of Use</b>	N/A
<b>Preparation for Decontamination</b>	N/A
<b>Disassembly Instructions</b>	N/A
<b>Cleaning – Manual</b>	N/A
<b>Cleaning – Automated</b>	N/A
<b>Disinfection</b>	N/A
<b>Drying</b>	N/A
<b>Maintenance, Inspection, and Testing</b>	N/A

<b>Reassembly Instructions</b>	N/A
<b>Packaging</b>	N/A
<b>Sterilization</b>	N/A
<b>Storage</b>	N/A
<b>Additional Information</b>	N/A

<b>Related Healthmark Products</b>	N/A
<b>Other Product Support Documents</b>	ProFormance™ Brochure, ProFormance™ Price List
<b>Reference Documents</b>	N/A
<b>Customer Service Contact</b>	Healthmark Industries Company, Inc. 18600 Malyn Blvd. Fraser, MI 48026 1-586-774-7600 <a href="mailto:healthmark@hmark.com">healthmark@hmark.com</a> <a href="http://hmark.com">hmark.com</a>