

Instructions for Use: FIS Mobile Cart

Brand Name of Product	FIS Mobile Cart
Generic Name of Product	FIS Mobile Cart
Product Code Number(s)	FIS7-TM, FIS7-MC, IPA-0001-62B, RS-0004-21, FLP-0002-17C, CLA-001
Intended Use	To use as a working station and transportation for the FIS-007.
Range of Applications for Product	Working station and transportation.
Key Specifications of Product	<ul style="list-style-type: none"> • Tablet Roll Stand: <ul style="list-style-type: none"> ○ 53-1/2 inches (135.9 cm) post with 1-1/4 inches (≈3.2 cm) diameter • Wheelbase: Base: <ul style="list-style-type: none"> ○ Twenty-one (21) inches (53.3 cm) with 10 pounds (4.5 kg) counterweight • Wire basket: <ul style="list-style-type: none"> ○ Maximum basket load: 5 pounds (2.27 kg) ○ Maximum basket height: 35 inches (88.9 cm); measured from the top of the basket to floor ○ Six (6) inches (15.2 cm) basket with cable management hooks • Pull handle: 1-1/4 inches (3.2 cm) diameter post • VESA adapter plate: <ul style="list-style-type: none"> ○ Seventy-five (75) mm adapter. ○ Maximum Display/Tablet weight: 12 pounds (5.5 kg). • Post/Rail Clamp: Three-quarters (3/4)- to 1-1/2 inches (19- to 38 mm) diameter post or 10- x 25 mm rail. • Tube holder kit: <ul style="list-style-type: none"> ○ Clear tube 12 inches long ○ Four (4) cable ties ○ Two (2) tube holders. • 3D Printed holder. • (1x) 5/16- x 1-inch HHCS • (1x) 5/16-inch Split Washer • (1x) 5/16-inch Flat Washer • (1x) Post Washer • (4x) M4 x 6 mm Pan Head Machine Screws (PHMS) • (3x) 10/32- x 1/2-inch FHMS • (1x) 1/2-inch (13 mm) GCX Wrench <p>Note: Phillips® (cross-head) screwdriver not provided.</p>

Shipping & Storage	
Shipping Conditions & Requirements	N/A
Storage Conditions	N/A
Packaging Contents	N/A
Shelf Life	CLA-001- five (5)-year warranty




Instructions for Using Product	
Description of Use(s)	To use as a working station and transportation for the FIS-007.
Preparation for Use	<ol style="list-style-type: none"> 1. Remove all parts from the packaging. 2. A Phillips screwdriver is required to assemble FIS Mobile Cart.
Diagrams (drawings, pictures)	  

Figure 1



Figure 2



Figure 2a



Figure 3

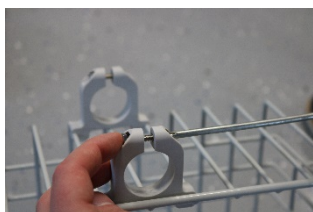


Figure 4

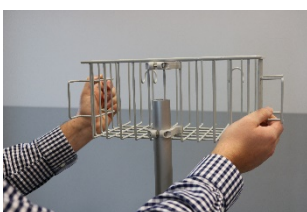


Figure 4a



Figure 5

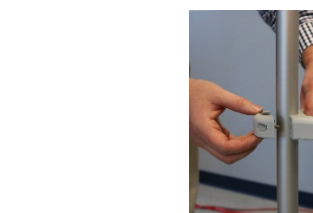


Figure 6

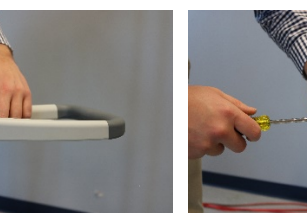


Figure 6a

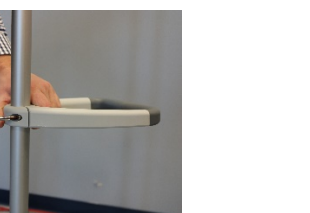


Figure 7

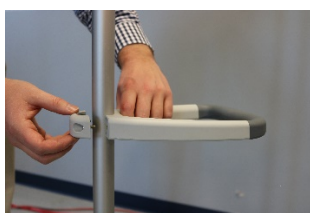


Figure 7a

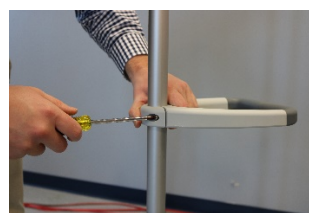


Figure 8

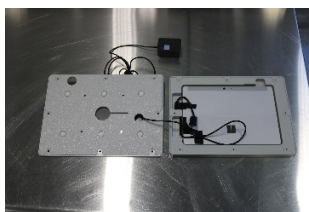


Figure 9

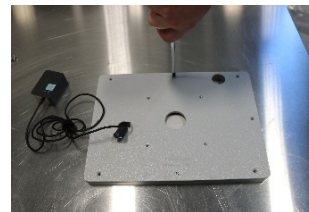


Figure 10

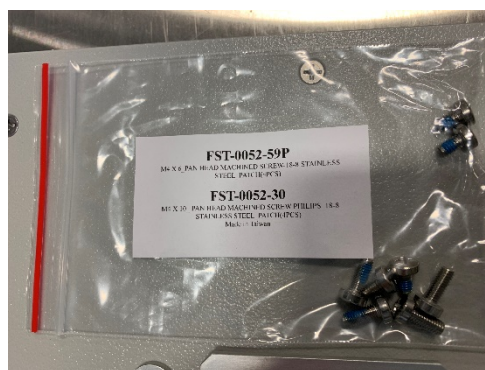


Figure 11

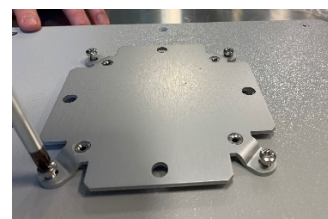


Figure 12

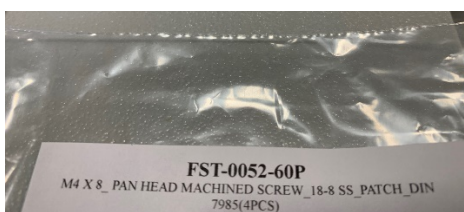


Figure 13

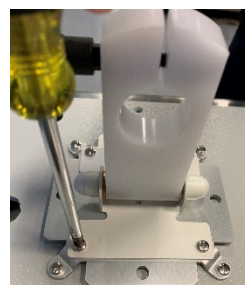




Figure 14

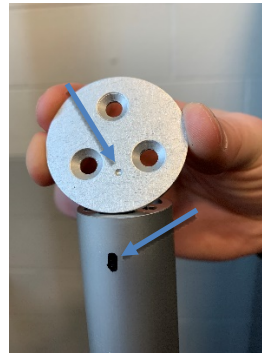


Figure 15

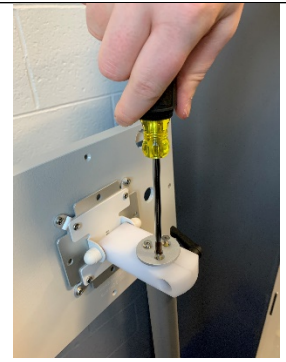


Figure 16



Figure 17

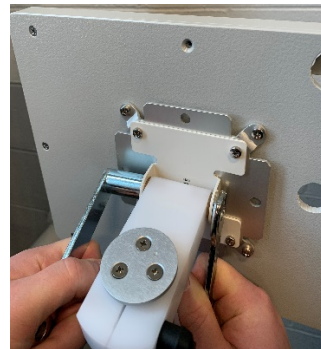


Figure 18



Figure 19



Figure 20



Figure 21

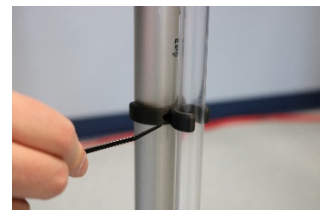


Figure 22

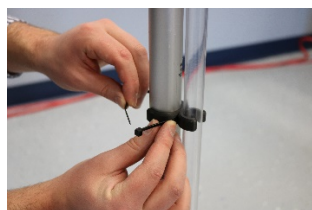


Figure 22a

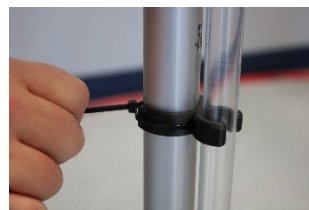


Figure 22b



Figure 23



Figure 23a

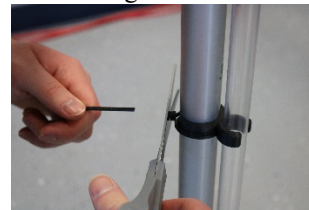


Figure 24



Figure 25



Figure 26



Figure 27

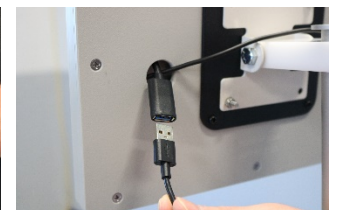


Figure 28

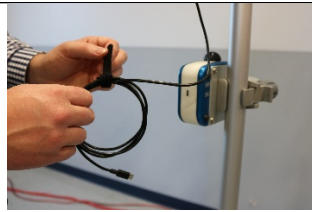


Figure 28a

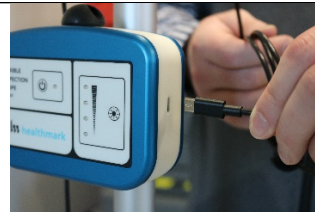


Figure 29



Figure 30



Figure 31

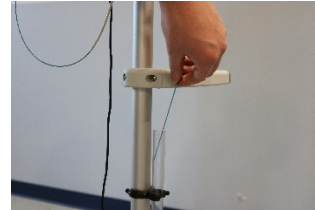


Figure 32

Steps for Use of Product

Tablet Roll Stand with basket

1. Place the post into the opening of the wheelbase. **(Fig. 1).**
2. Tilt the post and wheelbase onto its side, place the split washer, flat washer, and screw into the bottom of the pole to secure to the wheelbase with the $\frac{1}{2}$ -inch (13 mm) wrench provided. **(Fig. 2, 2a).**
3. Lock the wheel casings in position by pressing down on the lever of each wheel with your foot. To unlock, use your foot to lift the lever up into the unlocked position to allow the wheels to move. **(Fig. 3).**
4. Attach the two (2) brackets to the back of the basket by twisting the bracket to align with the grooves to fit on the basket with one (1) bracket at the top of the basket and the second at the bottom. **(Fig. 4, 4a).**
5. Insert the screws into the basket's bracket and loosely attach the nuts to the screws with a Phillips screwdriver. Do not tighten. **(Fig. 5).**
6. Take the basket and slide the brackets down over the post, then lower to the bottom and tighten the screws to hold the basket in place. **(Fig. 6, 6a).**

Installing the Handle

Attaching Handle to 1- $\frac{1}{2}$ inches Post

7. Place the curve of the handle onto the post so that it is flush with the post, attach with the two handle spacers to the opposite side of the post, secure with the two (2) #10-32 x $\frac{9}{16}$ inch Pan Head Machine Screws (PHMS). **(Fig. 7, 7a).**

Mounting Adapter

8. Tablet Holder with 75- x 75 mm mounting pattern displays with a 75- x 75 mm mounting pattern will be fastened directly to the VESA mounting plate but may require spacers between housing and mounting plate (see Using Nylon Spacers). Select the appropriate length M4 screws (plus spacers if required) and follow the Mounting Flat Panel Displays for 75- x 75 mm VESA Mounting Pattern.

Mounting Flat Panel Displays 75- x 75 mm

Installation Note: If mounting pattern is in a deeply recessed area of display housing, see *Using Nylon Spacers*, then follow mounting instructions below.

75- x75 mm VESA Mounting Pattern- Mounting Adapter Not Required

9. Thread M4 screws into top two (2) threaded holes of 75- x 75 mm mounting pattern, leaving 4 mm of thread exposed.
10. Lift display onto VESA Mounting Plate by guiding M4 screws into slots in top plate. Thread two (2) M4 screws into lower mounting holes. Tighten all screws.

The Healthmark tablet and tablet holder come pre-assembled. If the tablet needs to be replaced follow instructions that are provided.

11. Place tablet inside tablet holder as shown. **(Fig. 8).**
12. Apply the backside of the holder and replace screws along the perimeter of the tablet holder. **(Fig. 9).**

	<p>Tablet Holders with 100- x 100 mm Mounting Pattern- VESA Mounting Adapter Required for Installing Healthmark Tablet</p> <p>Fasten VESA Mounting Adapter to corresponding mounting holes with four (4) M4x10 PHMS. (Fig. 10).</p> <ol style="list-style-type: none"> Thread M4 screws into the top two (2) threaded holes of 100- x100 mm mounting pattern, leaving 4 mm of thread exposed. (Fig. 11). Align the tablet onto VESA Mounting Plate by guiding M4x8 screws into slots in top plate. (Fig.12). Thread two (2) M4 screws into the lower mounting holes. Tighten all screws using a Phillips screwdriver. (Fig. 13). Place the tablet holder onto the post 1/2-inch down and tighten the black lever by twisting clockwise to secure tablet holder into place. (Fig. 14) On top of the post washer locate the small hole and align with the marking on the post as indicated by the two (2) blue arrows. (Fig.15). Attach the post washer to the top of the post, secure with the three (3) 1/2-inch screws that are provided. (Fig. 16). For tilt tension adjustment of the tablet holder, pull the nylon end caps from the sides of the Video Electronics Standards Association (VESA) plate. (Fig. 17). Using two (2)-1/2-inch wrenches, hold the end of the hex head screw and tighten or loosen the hex nut to adjust tilt tension. Put nylon caps back on the plate when finished. (Fig. 18, 19). <p>Installing FIS-007 Tube Holder</p> <ol style="list-style-type: none"> Attach the two (2) tube holder brackets to the bottom half of the post. (Fig. 20). Press the FIS tube into the tube holder (Fig. 21). Thread the cable ties through the holes of the bracket tube holders and tighten to secure. (Fig.22, 22a, 22b). Apply second cable tie through the same hole and secure to the front of the tube. (Fig. 23, 23a). Repeat steps 17 and 18 for the bottom bracket. Cut the excess ties when finished. (Fig. 24). <p>To use the Healthmark FIS-007 with the FIS Mobile Cart, you will need the CLA-001(Post Clamp) to attach the control box.</p> <ol style="list-style-type: none"> Align the CAL-001 to the bottom of the FIS-007 control box. (Fig. 25). Secure with the four (4) provided screws with a Phillips screwdriver (Fig. 26). Align the CLA-001 to the post then tighten the adjustment knob to secure the CLA-001 to the post. (Fig. 27). Attach the USB cable to the USB port of the tablet. It is suggested to coil the cord and secure to the hook and loop fastener strap. (Fig. 28, 28a). Plug the USBC into the control box. (Fig. 29). <ol style="list-style-type: none"> Plug the catheter underneath the control box. (Fig. 30). When not in use, loop the catheter around and place into the black adhesive connector, then down into the tube. (Fig. 31, 32).
Interpretation of Test Results	N/A
Contraindications of Test Results	N/A
Documentation	N/A
Special Warnings and Cautions	<p>Tablet Stand</p> <ul style="list-style-type: none"> The surface finish will be permanently damaged by strong chemical and solvents (e.g., acetone or trichloroethylene). Do not use steel wool or other abrasive material. Damage caused by unapproved substances or processes will not be warranted. (Note: It is recommended to test any cleaning solution on a small, non-visible area of the mounting assembly to verify compatibility.) Never submerge or allow liquids to enter the mounting assembly. Wipe any cleaning agents off the mounting assembly immediately (using a water-dampened cloth). Dry the assembly thoroughly after cleaning. <p>Mounting Adapter</p> <ul style="list-style-type: none"> This mounting kit provides an assortment of hardware for a wide variety of display mounting applications. It is the responsibility of the installer of the mounting adapter to ensure all screws used to mount the display:

	<ul style="list-style-type: none"> ○ Have a minimum thread engagement of four (4) 360° turns into threaded inserts in rear of display and into threaded inserts in mounting adapter. ○ Are not inserted too far in the display, causing damage to internal components may occur. Failure to adhere to this warning could cause damage to equipment or injury to patients and/or personnel.
Disposal	N/A

Reprocessing Instructions	
Point of Use	N/A
Preparation for Decontamination	N/A
Disassembly Instructions	N/A
Cleaning – Manual	<p>The mounting assembly may be cleaned with most mild, non-abrasive solutions used in hospital environments:</p> <ul style="list-style-type: none"> • Diluted bleach • Ammonia • Alcohol solutions.
Cleaning – Automated	N/A
Disinfection	N/A
Drying	N/A
Maintenance, Inspection, and Testing	<ul style="list-style-type: none"> • Periodically, inspect all fasteners associated with the mounting assembly. • Tighten or adjust, as necessary, for optimal operation and safety.
Reassembly Instructions	N/A
Packaging	N/A
Sterilization	N/A
Storage	N/A
Additional Information	N/A
Related Healthmark Products	Flexible Inspection Scope FIS-007
Other Product Support Documents	ProSys™ Brochure, ProSys™ Price List
Reference Documents	N/A
Customer Service Contact	<p>Healthmark Industries Company, Inc 18600 Malyn Blvd. Fraser, MI 48026 1-586-774-7600 healthmark@hmark.com hmark.com</p>