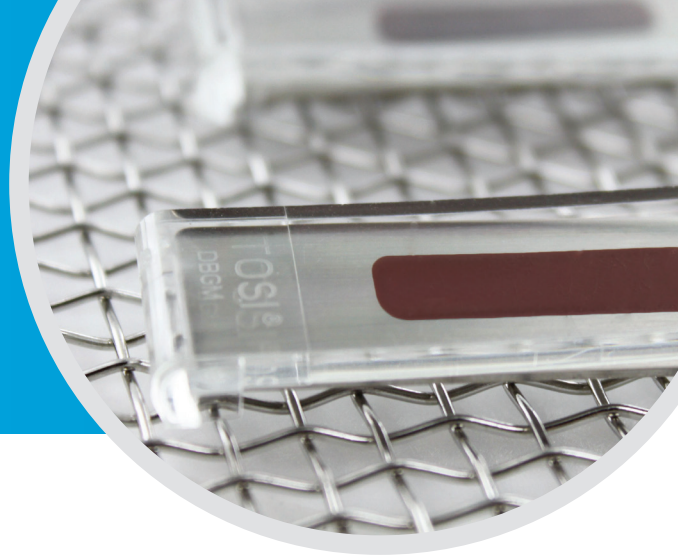


Why TOSI?

Reveal the hidden areas of instruments with the TOSI® washer test, the easy to use blood soil device that directly correlates to the cleaning challenge of surgical instruments

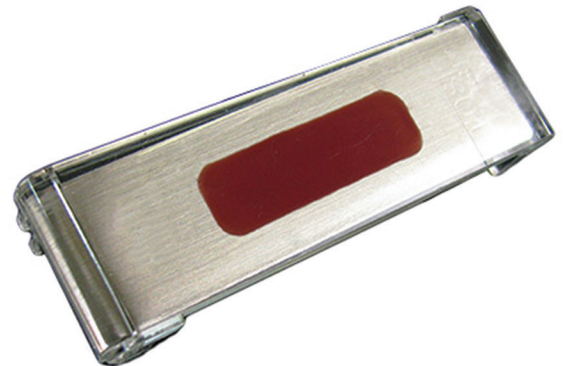


True Surrogate Device

TOSI® is the first device to provide a consistent, repeatable, and reliable method for evaluating the cleaning effectiveness of the automated instrument washer. This is possible, because the blood soil is manufactured to exacting specifications each and every time. When metered on to the stainless steel plate, the TOSI® is completely analogous to a stainless steel instrument soiled with dried blood. Placed in the see-through plastic holder, the challenge is identical to the areas of instruments typically hidden from view (i.e., box locks).

Hemoglobin, Albumin & Fibrin

TOSI blood soil is comprised of the 3 elements of blood; hemoglobin, albumin and fibrin. Hemoglobin and albumin are easily soluble in water but fibrin is insoluble. Does your washer test prove the removal of fibrin? TOSI does.



Test Performance of All Levels of the Instrument Washer

Are you testing all levels in your washer? The only way to effectively guarantee that all washer arms are functioning and your detergents are cleaning properly at all levels is to test all levels. The routine use of this test will help insure that your instrument washer is performing at a consistent level, enhancing the routine visual inspection of instruments. TOSI® complies with new AAMI and AORN Guidelines as well as ASTM Guide D7225.

