




BUILDING BLOCKS

FOR STRONGER

E N D O

**Better tools build better outcomes.
Let's strengthen endo together.**

Endoscope processing is built on a series of critical steps, and each one calls for tools that support clarity and compliance. Our endo-focused solutions and educational support are designed to help your team build a strong foundation for success.

-  **Manual Cleaning**
-  **Labeling**
-  **Protective Equipment**
-  **Inspection Tools**
-  **Transport & Storage**
-  **Educational Resources**



**Let's build a stronger
endo foundation for
your team.**

Scan to get started.

 **healthmark**
A Getinge company



Healthmark Academy

EMPOWERING THE HEART OF THE HOSPITAL

Your path to CER certification success

CER Certification Prep Course

Your Certification Journey Starts Here

Healthmark's CER Certification Prep Course is designed to equip you with the knowledge and skills needed to pass your HSPA exam with confidence. Crafted by a team of world-renowned educators with decades of experience in Endoscope Processing and Infection Control, this course provides an in-depth, comprehensive approach to ensure your success. Take control of your professional growth and prepare for your Certified Endoscope Reprocessor (CER) exam with the best in the industry. Invest in your future today with our trusted, expert-led CER Certification Prep Course.

Why Choose Us?

Endoscope reprocessing is one of the most technical and detail-driven areas of device care and Healthmark is here to support you every step of the way.

With decades of experience in endoscopy education, we provide the insight, tools, and confidence you need to excel on the CER exam and strengthen your role in protecting patients every day. This course delivers the practical, real-world education you need to thrive.



Enroll Today

Scan here or visit academy.hmark.com to enroll & start your certification journey with Healthmark!

What Makes Our Course Stand Out?

World-Class Educators

Learn from a distinguished group of experts who bring real-world insights into every lesson.

Complete Course Materials

We provide everything you need to succeed, from textbooks and practice exams to access to ongoing support and resources.

Continuous Support

Our commitment to your success doesn't end with the course. With our dedicated team at your side, you'll receive continuous support throughout your learning journey, and beyond.

Comprehensive Learning Experience

Gain expertise in critical topics, including medical instrument care, sterilization techniques, infection prevention protocols, and more, through a structured, self-paced program.

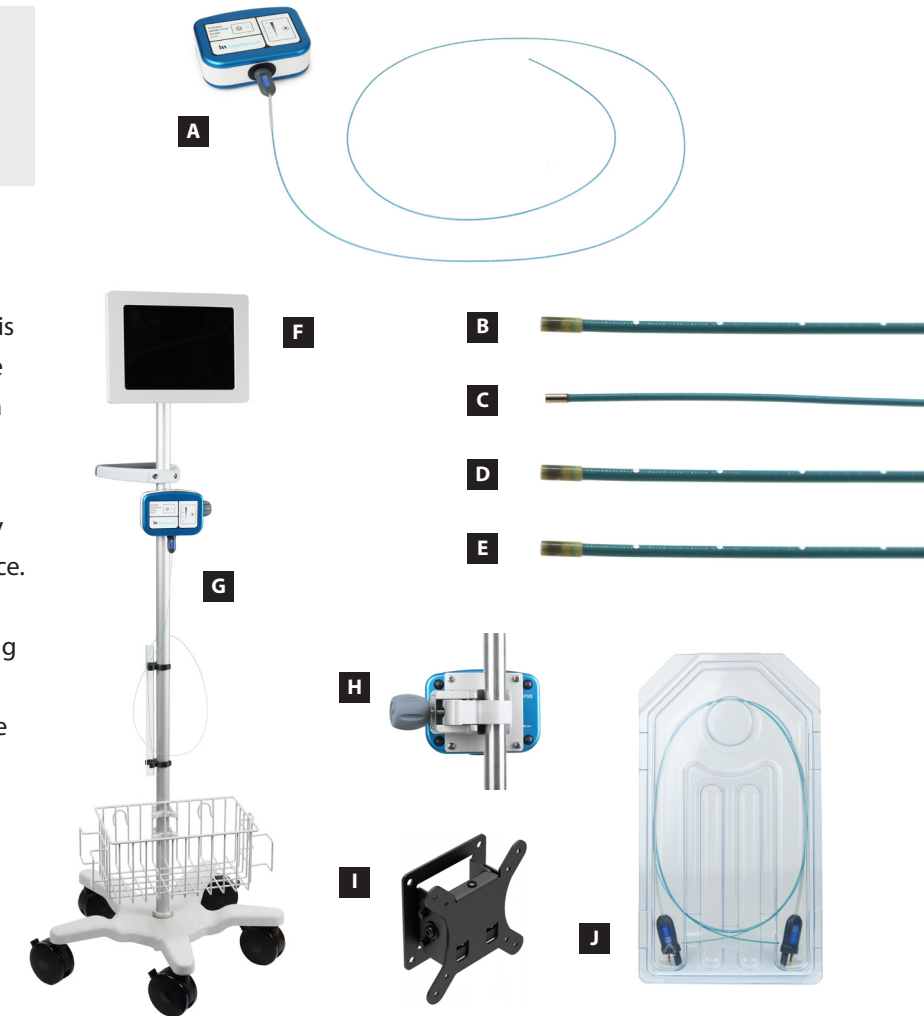
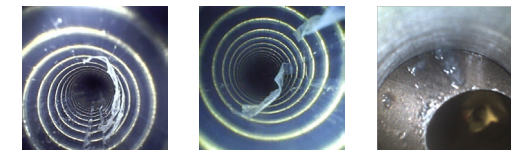
HMMKT100-001

Flexible Inspection Scope

Visually inspect internal channels

Designed to visually inspect internal channels of potentially soiled or damaged items, the FIS-007 provides enhanced light, vision, and magnification. This borescope has a modular design with interchangeable Flexible Inspection Scope attachments that attach to a control box which allows light level adjustments. The Scope Viewer Software is offered with the USB control box version of the FIS-007 and allows the user to easily capture and save photos and videos for future reference.

The FIS-007 Mobile Cart is a convenient mobile working station for the FIS-007. It is designed to be used with the FIS-007 Mounting Tablet, which includes the Scope Viewer Software pre-loaded.



	Item Number	Description	Qty
A	FIS-007USK	FIS-007 Kit (USB Control Box & CT-101 Catheter)	EA
	FIS-007UB	FIS-007 USB Control Box (Compatible with Scope Viewer Software)	EA
	FIS-007HB	FIS-007 HDMI Control Box (Not compatible with Scope Viewer Software)	EA
	B	CT-101	Flexible Inspection Scope (1.9mm Diameter, 110cm Length)
C	CT-102	Flexible Inspection Scope (1.06mm Diameter, 110cm Length)	EA
D	CT-103	Flexible Inspection Scope (1.9mm Diameter, 60cm Length)	EA
E	CT-104	Flexible Inspection Scope (1.9mm Diameter, 200cm Length)	EA
F	FIS7-TM	FIS-007 Mounting Tablet	EA
G	FIS7-MC	FIS-007 Mobile Cart (Borescope not included)	EA
H	CLA-001	Clamp for FIS-007	EA
I	FIS-WMB	FIS Wall Mount with Bracket	EA
J	FIS-007SPT	FIS-007 Storage & Protection Tray	EA

LED 4X Magnifier

Inspect surfaces for potential damage

The LED 4X Magnifier is equipped with a 72mm diameter lens for up close visual inspection for potential damage and residual soil after cleaning. The lightweight magnifier comes with four white LED lights featuring three levels of brightness, 4x the magnification for easy and thorough inspection of instrumentation, as well as an on/off switch and a Micro-USB charging cable.



A

Handheld Multi-Magnifier

For external inspection of endoscopes

Designed to comply with AAMI ST91, this tool is designed for detailed visual inspection of flexible endoscopes that allow the assessment of external surfaces. This unique item features 3x, 10x, and 55x magnification lenses and five LED lights.



B

USB Microscope & Stand

Designed for enhanced visual inspection

The handheld USB Microscope is manufactured with a 0.3-megapixel glass lens that has a magnification range from 10x to 230x and a resolution of 640 x 480 pixels. Equipped with 8 white LEDs, the USB Microscope allows for both image capture and recording. The USB Microscope can be used in conjunction with an optional adjustable stand, which allows for easy inspection by freeing up both hands of the user.



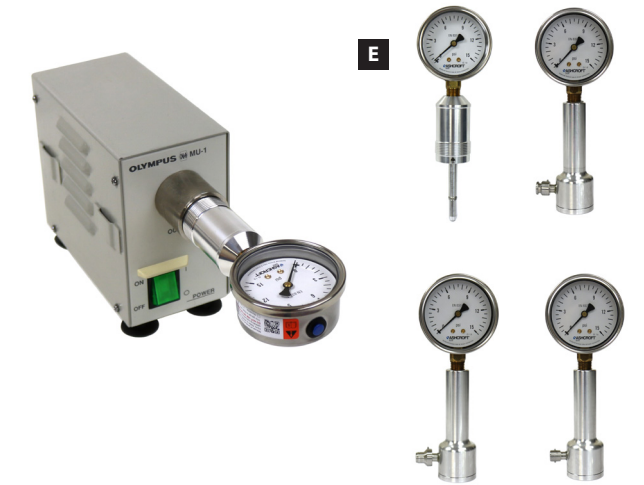
C

D

Leak Tester Tester

Check the accuracy of leakage testers

Designed to check the accuracy of air pressure provided by automated and handheld endoscope leakage testers, the Leak Tester Tester assists healthcare workers in the reprocessing areas to make sure their endoscope leak tester is working properly by testing the functionality of the pump and the connector for leaks prior to using.



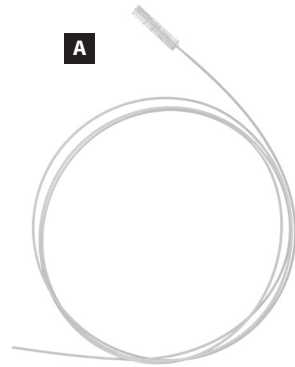
E

Item Number	Description	Magnification	Qty
A	MAG-002 LED 4X Magnifier	4x	EA
B	MAG-310 Handheld Multi-Magnifier	3x 10x, and 55x	EA
C	MICR008 USB Microscope	10x to 230x	EA
D	MSTN-002 Stand for USB Microscope		EA
E	LTT4000 Leak Tester Tester Kit (Includes LTT-1001, LTT-1002, LTT-1003, LTT-1004)		EA
	LTT-1001 Olympus Automated Leak Tester Tester		EA
	LTT-1002 Handheld Olympus Leak Tester Tester		EA
	LTT-1003 Handheld Pentax Leak Tester Tester		EA
	LTT-1004 Handheld Storz Leak Tester Tester		EA

Endoscope Channel Brushes

Single-use brushes for internal channels

Designed to facilitate maximum cleaning performance while ensuring compatibility with the endoscope channel, Endoscope Channel Brushes are long enough, small enough and flexible enough to clean your flexible endoscopes.



Angled Toothbrush

Ideal for cleaning uneven surfaces

This is a general cleaning brush that can be used to clean the forceps elevator and elevator wires of endoscopes as well as the external surfaces and openings of camera heads.



Control Head Brush

Designed to clean small areas of endoscopes

The Control Head Brush has a 10mm diameter brush head made of nylon bristles. It is designed to help clean the control head, dials and valve openings of flexible endoscopes.



Elevator Mechanism Brush

For elevator mechanisms of duodenoscopes

Equivalent in brush dimensions to the Olympus MAJ-1888, this brush is designed to clean around the forceps elevator area of duodenoscopes and other endoscopes.



Trumpet Valve Brush

Double-ended endoscope cleaning brush

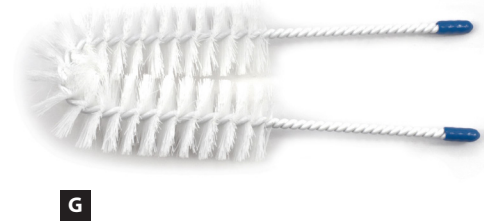
This double-ended brush is designed for cleaning trumpet valves, ports and barrels of laparoscopic instruments. The two diameters are the most common sizes for these instruments.



External Scope Brush

Soft bristles for cleaning delicate surfaces

Disposable brush with soft bristles for fragile external sheaths of flexible endoscopes. Its shape is particularly suited to brushing crevices in handles, connecting cables and housing.



	Item Number	Description	Bristle Diameter	Bristle Length	Overall Length	Expectancy	Qty	
A	CC2-100-200	Channel Brush (1.0 - 1.5mm)	2mm	16mm	108cm	Single-Use	12	
	CC2-165-200	Endoscope Brush (1.0 - 1.5mm)	2mm	16mm	160cm	Single-Use	12	
	CC2-200-200	Endoscope Brush (1.0 - 1.5mm)	2mm	16mm	210cm	Single-Use	12	
	CC2-200-200-LV11	Endoscope Brush & LV11 Valve Brush Kit	2mm	16mm	210cm	Single-Use	12	
	SU055-1215	Endoscope Brush (1.2 - 1.5mm)	2mm	17mm	55cm	Single-Use	50	
	SU075-1215	Endoscope Brush (1.2 - 1.5mm)	2mm	17mm	75cm	Single-Use	50	
	SU200-1215	Endoscope Brush (1.2 - 1.5mm)	2mm	17mm	200cm	Single-Use	50	
	SU055-2632	Endoscope Brush (2.6 - 3.2mm)	4mm	27mm	55cm	Single-Use	50	
	CC2-230-400	Endoscope Brush (2.2 - 3.2mm)	4mm	27mm	230cm	Single-Use	12	
	CC2-230-400-LV11	Endoscope Brush & LV11 Valve Brush Kit	4mm	27mm	230cm	Single-Use	12	
	CC2-025-600	Endoscope Brush (2.8 - 4.2mm)	5.50mm	27mm	25cm	Single-Use	12	
	CC2-230-600	Endoscope Brush (2.8 - 4.2mm)	5.50mm	27mm	230cm	Single-Use	12	
B	BRS-91-6	Sterile Endoscope Brush (2.8 - 4.2mm)	5.50mm	27mm	230cm	Single-Use	20	
	CC2-230-600-LV11	Endoscope Brush & LV11 Valve Brush Kit	5.50mm	27mm	230cm	Single-Use	12	
	CC-230-900	Endoscope Brush (5.0 - 7.0mm)	9mm	44mm	230cm	Single-Use	12	
	CC-230-900-3770	Endoscope Brush & 3770 Valve Brush Kit	9mm	44mm	230cm	Single-Use	12	
	3184	Angled Toothbrush			16.40cm	Single-Use	10 / 100	
	C	CHB-010	Control Head/Valve Cleaning Brush	10.50mm	40mm	5.40cm	Single-Use	EA
		BRS-CH	Sterile Control Head/Valve Cleaning Brush	10.50mm	40mm	5.40cm	Single-Use	25
	D	EMB-002	Elevator Mechanism Brush	3mm	10.8mm	5.00cm	Single-Use	10
		E	3770	Trumpet Valve Brush	12mm / 4mm	9.30 / 25.30mm	15.50cm	Single-Use
	BRS-TV		Sterile Trumpet Valve Brush	12mm / 4mm	9.30 / 25.30mm	15.50cm	Single-Use	25
	F	LV11	Trumpet Valve Brush (Offered with Kits Only)	11mm / 5.4mm		13.50cm	Single-Use	EA
		G	SUBS-50	External Scope Brush w/ Soft White Bristles			15cm	Single-Use

Indicator HangTime Labels

Easy activation indicator shows elapsed time

Indicator HangTime Labels are offered with a 1 Hour, 7 Day or 12 Day time indicator adhered to a self-looping label, allowing for quick and ongoing observable clarification of how long it's been since an endoscope has been processed. The label allows staff to document the scope serial number and healthcare worker initials, as well as the date and time the indicator was activated. To activate the indicator, firmly press the blister on the strip, and a safe dye migrates along a display run-out window, which shows elapsed time.

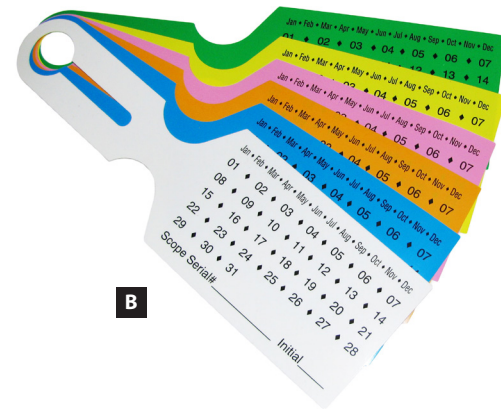


A

HangTime Labels

Document when a scope was last processed

HangTime Labels are designed to assist healthcare workers with tracking the day and month when the scope was last processed. They also include fields for the Scope Serial Number and Initials. They are available in green, yellow, pink, orange, blue and white.



B

Flexible Endoscope Label

Document scope processing details

Flexible Endoscope Labels are sure to be the solution to managing scope reprocessing and ensuring quality patient care. This self-looping label includes fillable fields for important details and a space to place a patient sticker.



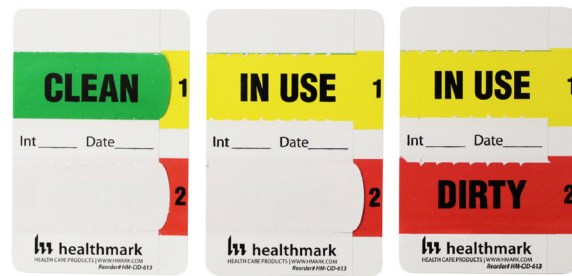
C

	Item Number	Description	Color	Length	Width	Qty
A	HTK-1H2	1-Hour Indicator HangTime Label	Yellow	8.50"	2.50"	100
	HTK-7D2	7-Day Indicator HangTime Label	Green	8.50"	2.50"	100
	HTK-12D	12-Day Indicator HangTime Label	Blue	8.50"	2.50"	100
B	403225 HTKG	HangTime Label	Green	8.50"	2.50"	100
B	403225 HTKY	HangTime Label	Yellow	8.50"	2.50"	100
B	403225 HTKP	HangTime Label	Pink	8.50"	2.50"	100
B	403225 HTKO	HangTime Label	Orange	8.50"	2.50"	100
B	403225 HTKB	HangTime Label	Blue	8.50"	2.50"	100
B	403225 HTK	HangTime Label	White	8.50"	2.50"	500
	403225 HTKR	HangTime Label	Red	8.50"	2.50"	100
C	404225-351-GI	Flexible Endoscope Label	White	13.00"	2.50"	500

Multi-Purpose Equipment Label

Identify contents as Clean, In Use or Dirty

The Multi-Purpose Equipment Label was developed as a way to ensure consistency and identify whether medical equipment designated for patient use is either clean, in-use or dirty. It has a pull-tab style design with an adhesive backing that doesn't leave residue behind and can be applied to numerous medical devices, allowing individuals to correctly confirm the status of equipment.



A

High Level Disinfected Label

Identify contents as Clean/HLD or Biohazard

Designed for containers that hold high-level disinfected or contaminated scopes, this label has a green top tab that reads "CLEAN AND HIGH LEVEL DISINFECTED", as well as a removable self-adhesive orange bottom tab that reads "BIOHAZARD" in black text and provides space to record the time the scope was pre-cleaned.



B

Transportation Label

Available with or without transport checklist

This label is ideal for transporting materials considered bio-hazard, while acting as an essential communication tool in the process. By labeling a cart or container "biohazard" upon its return to the SPD, the Transportation Identification Tag assists in supplying information to the OR/Procedure Room. It has a check list for the surgical/procedure room/sterile processing team to ensure adequate delivery of the case cart or container in question. Also available without the checklist.



C

Quick Turnover Label

Identify the status of contents

This label has two perforated tabs; a green tab with "TRANSPORTATION TAG" and a red bottom with "QUICK TURNOVER" along with a space to indicate items and time needed, as well as a green tab with "CLEAN" in black text and a fluorescent orange bottom featuring a biohazard symbol with "DIRTY" and "BIOHAZARD" in black text.



D

High Level Disinfected Label

Label endoscopes after disinfection

Label your endoscope with a "High Level Disinfection" sticker after disinfection. Include date, initials of processor and process number.



E

	Item Number	Description	Color	Length	Width	Qty	
	A	HM-CID-613	Multi-Purpose Equipment Label	Green/Yellow/Red	2.00"	3.00"	250
	B	HM-52483-HLD	High Level Disinfected Label	Green/Orange	2.00"	3.00"	250
	C	AV-52481	2 Part Clean/Dirty Label with Checklist	Green/Orange	2.00"	3.00"	1000 / 250
		AV-52482	2 Part Clean/Dirty Label without Checklist	Green/Orange	2.00"	3.00"	1000 / 250
	D	HM-52489	Quick Turnover 2-Part Clean/Dirty Label	Green/Red/Orange	2.00"	3.00"	250
	E	DC-100214-71-BL	"High Level Disinfected" Labels	Black on Blue	2.25"	1.00"	1000 / Roll



A

B

C

Ultra-Long Decontam Gloves

Designed for an extra level of personal protection for healthcare workers in decontam, the 7 mil single-use, powder-free, nitrile Ultra-Long Decontam Gloves have excellent tactile sensitivity with a full textured surface for improved grip.

	Item Number	Size	Thickness	Length	Qty
A	ULDG-1	Small	7 mil	16"	50 / 500
	ULDG-2	Medium	7 mil	16"	50 / 500
	ULDG-3	Large	7 mil	16"	50 / 500
	ULDG-4	Extra Large	7 mil	16"	50 / 500

Lined Sleeve Gloves

Lined Sleeve Gloves are a fusion of a 11 mil (70 series) or 15 mil (80 series) nitrile lined EVS glove that adheres to a 4 mil protective sleeve with an elastic cuff. They provide complete hand and arm protection. The Lined Sleeve Gloves are comfortable, flexible, and lightweight, while the elastic cuff on the sleeve gloves inhibits slippage of the sleeve from the upper arm.

	Item Number	Size	Thickness	Length	Qty
B	41270	Extra Small	11 mil / 4 mil	28"	50
	41370	Small	11 mil / 4 mil	28"	50
	41470	Medium	11 mil / 4 mil	28"	50
	41570	Large	11 mil / 4 mil	28"	50
	41670	Extra large	11 mil / 4 mil	28"	50
C	41280	Extra Small	15 mil / 4 mil	28"	50
	41380	Small	15 mil / 4 mil	28"	50
	41480	Medium	15 mil / 4 mil	28"	50
	41580	Large	15 mil / 4 mil	28"	50
	41680	Extra Large	15 mil / 4 mil	28"	50

Decontamination Gown

Built for protection in decontam

Designed for use in device reprocessing areas, the Decontamination Gown is constructed of breathable material for liquid barrier performance and includes a high-level strike-through resistance in the most vulnerable zone, protecting healthcare workers from soil and bioburden when cleaning items.



A

Face Shields

Available with or without a drape

Manufactured from 7 mil PET, the lightweight Face Shield is 13 inches high by 9 inches wide, with a latex-free elastic headband, and 1-inch brow foam. The Face Shield with Drape adds a 12 inch fluid barrier that extends below the standard face shield and tucks inside a protective garment, providing additional protection in the area under the shield from splashing. The Face Shield and Face Shield with Drape are designed for healthcare workers in the decontamination area.



B



C

Disposable Bootlegs

Mid-thigh and knee-high lengths

Healthmark's Disposable Bootlegs are one size fits all, slip-resistant and available in knee-high or mid-thigh lengths. An elastic hem holds the Bootleg comfortably in place. The material is 2 mil Polyethylene to eliminate leakage.



D

E

	Item Number	Description	Size	Material	Qty
A	MN110 SMMD	Decontamination Gown	Small / Medium	Polypropylene	30
	MN110 LGXL	Decontamination Gown	Large / X-Large	Polypropylene	30
	MN110 2X3X	Decontamination Gown	XX-Large / XXX-Large	Polypropylene	30
	MN110 4X	Decontamination Gown	XXXX-Large	Polypropylene	30
B	SHL-004	Face Shield	One Size	7 mil PET / Elastic / Brow Foam	100
C	SHL-005	Face Shield with Drape	One Size	7 mil PET / Elastic / Brow Foam	100
D	KNEE-HI	Disposable Knee-Hi Bootleg	One Size	Polyethylene	50
E	BOOTLEG	Disposable Mid-Thigh Bootleg	One Size	Polyethylene	50

EndoDolly

Designed to hold up to two scopes per pole

The EndoDolly™ is designed for hanging scopes and stands on a five-wheel locking base for ease of transportation. It is equipped with 3 self-adjusting extension poles that can be individually raised or lowered by simply touching a pressure button. The user can extend the 2 outside poles to a maximum height of 83.5 inches or lowered to a minimum height of 52.4 inches, with the center pole able to be adjusted to a maximum height of 107 inches or lowered to a minimum height of 58.7 inches. Located at the top of each pole is a lock tight hook holder that can accommodate two scopes per pole of any length and supports flexible scopes up to 15 lbs. per pole.



EndoWally

Designed to hang scopes with a wall mount

The EndoWally™ is designed for hanging scopes and is built with wall mount support arms that pivot to allow the user to swing the scope into place as needed. The EndoWally™ is equipped with a self-adjusting pole that can be raised or lowered by simply touching a pressure button. For stability, the user should ensure that 4 inches of the pole is always sticking out through the bottom support arm, which means the max the pole can be extended to is 61 inches. Located at the top of the pole is a lock tight hook holder that can accommodate two scopes of any length and has a weight capacity of 40 lbs.



Scope Holder

Designed to hang scopes vertically

Crafted from Plexiglas®, the Scope Holder is a wall-mountable design manufactured for assistance in testing various scopes prior to medical procedures. The vertical storage unit provides medical professionals with additional space, while keeping the scope in the proper upright position for thorough analysis before use.



Valve Bags

Secure small endoscope components

Valve Bags and Secure Valve Bags are made of a tough, lightweight plastic mesh that helps ensure the traceability of these critical endoscope components after reprocessing by keeping the valves and scope together. Simply place the valves in the bag then tie to the scope. The scope is now ready for the next procedure. Once in the procedure room, remove the valves and dispose of this inexpensive single-use item. The Secure Valve Bags feature a tamper-evident seal.



	Item Number	Description	Qty
A	110405-SP	EndoDolly	EA
B	EWALLY-001	EndoWally	EA
C	SCPH-102	Scope Holder	EA
D	VB604 GN	Valve Bag - Green Mesh	100
	VB604 WT	Valve Bag - White Mesh	100
	SVB604 WT CLN	Secure Valve Bag - White with Clean Lock	100
E	SVB604 WT	Secure Valve Bag - White with Numbered Lock	100

Plastic Utility Carts

Heavy duty, scratch & stain resistant

Plastic Utility Carts include a lifetime warranty. They will not stain, scratch, dent or rust. They are constructed of strong, heavy-duty, high-density polyethylene. The integral push handle is molded into the top shelf.



Utility Carts

Offered with two or three shelves

Each kit includes two U-handle posts, four casters and either two or three shelves. 500lb. capacity. Casters are 4" diameter (18" shelves) or 5" resilient rubber and each is swivel-style. Shipped as components and quickly assembled with the use of a hammer.



HushKart

Quiet mobility & easy to clean design

The HushKart is designed for quiet mobility and easy cleaning with one-piece, double-wall polyethylene construction. The HushKart offers three shelves with slip resistant surfaces as well as swivel casters with one brake.



Disposable Cart Covers

Eliminate the expense of laundering covers

Available in clear plastic when you want contents visible and opaque when you want contents out of sight. Made of tough polyethylene plastic, these covers protect carts/contents and eliminate the time and expense of laundering cloth covers.

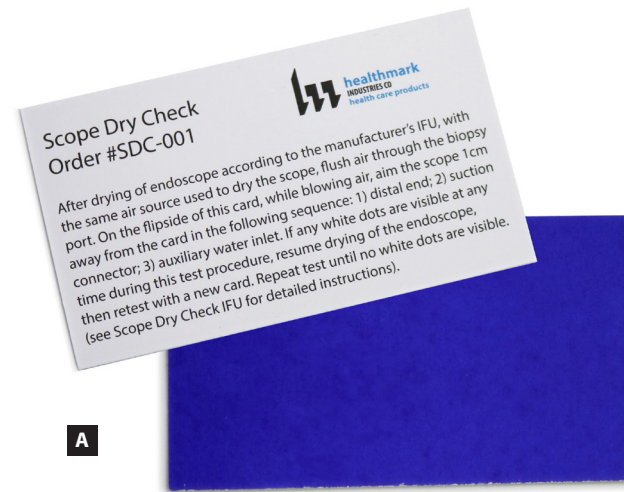


	Item Number	Description	Length	Width	Height	Qty
A	HE-32 BK	2-Shelf Plastic Utility Cart - Black	24.00"	18.00"	33.00"	EA
B	HE-32 GY	2-Shelf Plastic Utility Cart - Grey	24.00"	18.00"	30.00"	EA
C	EU2-1824Z	Utility Cart - Two Shelves	18.00"	24.00"	37.00"	EA
	EU2-1836Z	Utility Cart - Two Shelves	18.00"	36.00"	37.00"	EA
	EU2-2136Z	Utility Cart - Two Shelves	21.00"	36.00"	37.00"	EA
	EU2-2436Z	Utility Cart - Two Shelves	24.00"	36.00"	37.00"	EA
D	EU3-1824Z	Utility Cart - Three Shelves	18.00"	24.00"	37.00"	EA
	EU3-1830Z	Utility Cart - Three Shelves	18.00"	30.00"	37.00"	EA
	EU3-1836Z	Utility Cart - Three Shelves	18.00"	36.00"	37.00"	EA
	EU3-2136Z	Utility Cart - Three Shelves	21.00"	36.00"	37.00"	EA
E	EU3-2436Z	Utility Cart - Three Shelves	24.00"	36.00"	37.00"	EA
	QCT-2301 CG	Open HushKart - Charcoal Gray	33.25"	20.00"	34.625"	EA
F	667-202450-1M	Disposable Cart Cover	20.00"	24.00"	50.00"	50
	666-1 CLEAR	Disposable Cart Cover	24.00"	27.00"	34.00"	50
	668-3 CLEAR	Disposable Cart Cover	24.00"	48.00"	48.00"	50
	667-256161-1M	Disposable Cart Cover	24.00"	60.00"	60.00"	50
	667-252958-1M	Disposable Cart Cover	25.00"	29.00"	58.00"	50
	667-274036-1M	Disposable Cart Cover	27.00"	40.00"	36.00"	50
	667-382648-1M	Disposable Cart Cover	38.00"	26.00"	48.00"	50

Scope Dry Check

Detect residual moisture in channels

This 3.5 x 2 inch card detects residual moisture from lumened/channeled items. Detect Residual Moisture from Lumened/Channeled Items with Scope Dry Check. Flush air through the lumened/channeled items, place the Scope Dry Check 1cm away from the distal opening, and examine the Scope Dry Check for white dots. Detects residual moisture >0.05µL in 2-5 seconds.



A

Healthmark Watermark

12" x 3" thermometer with water fill line

A crystal thermometer with a water fill line that adheres to the inside of a manual or ultrasonic soaking bath, tub, sink, or basin. Allows staff to monitor solution temperature and ensure it stays within the range specified in the detergent IFU.



B

Item Number	Details	Size	Qty	
A	SDC-001	Scope Dry Check	3.50" x 2.00"	10
B	TEMP-WMK	Healthmark Watermark	12.00" x 3.00"	EA

SST Tray Liners

Green, red and clear liners

Eliminate confusion between reprocessed and soiled medical devices with our color-coded SST Liners. The single-use liners assist with identification, temporary storage and transportation of medical equipment by providing an enclosed environment for instruments.



A

Vertical Soaker

3.5" diameter x 20" tall

Ideal to soak M.I.S. type instruments as part of the decontamination process, the Vertical Soaker stands 20" high and 3.5" in diameter. It is graduated to 2000 ml and made of polypropylene.



B

Item Number	Description	Details	Qty	
A	SST-CCD-LNR	SST Liners	36" x 18", 1 mil, Clear, Red, Green	100 Sets of Clear, Red & Green
B	VS-3520	Vertical Soaker - 2000ml	3.50" x 3.50" x 20.00"	EA

XEN Enzymatic

Authority in every drop

XEN Enzymatic's triple-enzyme formula offers your sterile processing department an adaptable pH-neutral enzymatic detergent. With its universal material compatibility, this is the versatile chemistry you need for tackling everyday sterile processing needs with no guesswork.

Enzymatic's transparent solution improves staff safety and effectiveness, ensuring submerged instruments, sharps, and any remaining debris are visible in manual sinks. Its improved enzyme stability can tolerate increased temperatures during transport, providing excellent shelf-life performance.



XEN Enzymatic +

Versatility in every drop

With its low-foam, pH-neutral, ultra-concentrated formulation, XEN Enzymatic+ delivers superb control for cleaning a wide range of medical instruments, including your most intricate devices. Formulated to remove the most challenging soils, it's also compatible with a broad range of materials and devices.

Enzymatic+'s quadruple-enzyme formula is designed for optimal results in manual cleaning, ultrasonic machines, automated washer-disinfectors, and cart washers. It remains transparent at all doses and temperatures, simplifying sterile processing workflows. Formulated for enzyme stability, Enzymatic+ withstands high temperatures during transport, resulting in an extended shelf life. This ultra-concentrated formula means more cycles per container, reducing its economic and environmental impact on your SPD.



XEN Xcelerate

Initiative in every drop

This ready-to-use foam spray requires no dilution, maximizing usability when time is tight for healthcare professionals. XEN Xcelerate kickstarts cleaning at the point of use, allowing the XEN sterile processing workflow to begin before instruments even reach the SPD, providing your staff with a better starting point in the manual sinks.

Chemically designed to support the cycles of washer-disinfectors, Xcelerate is applied in the OR or the ED to begin the process of decontamination. Early treatment reduces the risk of biofilm formation, and helps prevent corrosion.



	Item Number	Details	Size	Qty
A	6036002801	XEN Enzymatic	15 Gallons	EA
B	6036002701	XEN Enzymatic	5 Gallons	EA
C	6036002601	XEN Enzymatic	5 Liters	EA
D	6036003101	XEN Enzymatic+	15 Gallons	EA
E	6036003001	XEN Enzymatic+	5 Gallons	EA
F	6036002901	XEN Enzymatic+	5 Liters	EA
G	6036002401	XEN Xcelerate	16 fl. oz.	6



A Getinge company

Intelligent Solutions
for Instrument Care &
Infection Control

hmark.com

Healthmark Industries Co. Inc.

18600 Malyn Blvd.
Fraser, Michigan 48026
USA

Call Us

Toll Free: 800.521.6224

International: +1.586.774.7600

Fax: 586.491.2113

Email Us

Contact: healthmark@hmark.com

Order Inquiries: hmorders@hmark.com

